

ROCK-A-GRAM



November, 2011



Volume 43, No. 4, Page 1

General Meeting

Thursday, November 17, 2011

Location:

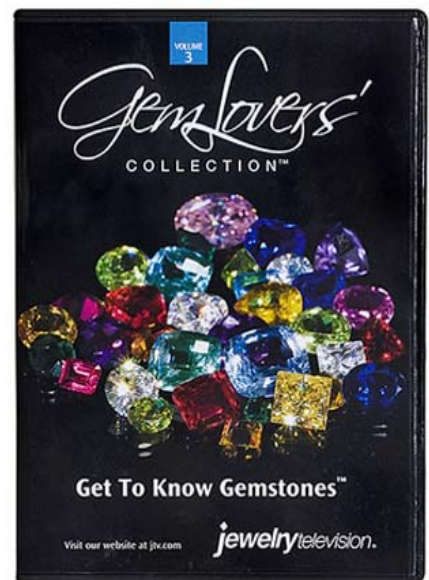
Clubhouse

4619 69th Street North
St. Petersburg, FL

Program:

“Gem Lovers” by Jewelry TV

This video presentation is about getting to know your gem stones. You don't want to miss to one.



DUES

\$15.00 Individuals—\$20 per family

DUES FOR 2012 ARE NOW DUE!! Dues for 2012 must be paid by Nov. 30, 2011 for your membership to continue in the Suncoast Gem and Mineral Society and continue to receive the monthly Rock-A-Gram newsletter. Dues can be given to the membership chairperson, Donna Sapp, at the monthly meeting or they can be mailed to her at: Donna Sapp, 3200 74th Avenue North, St Petersburg, FL 33702. If you prefer your membership cards mailed to you, please enclose a self-addressed stamped envelope.

If your last name starts with A-M, please bring goodies to our meeting to share. If you won something at our last meeting, please bring a donated item for our drawing. Thank you.

Board Members

Pat Davis, President 727-323-2147
Email: outtamygourd@yahoo.com

George Comas, Vice President 727-526-7176
Email: gcomas@tampabay.rr.com

Sue Hazelden, Treasurer 727-321-5732
Email: sujagems1@aol.com

Julia Larson, Recording Sec. 727-522-1254
Email: glassgal0947@gmail.com

Dave Schwebel, Corr. Sec. 727-547-0364
Email: dschwebel@tampabay.rr.com

Donna Remsnyder, 3 yr. Director 727-692-6006
Email: dsr75@verizon.net

Donna Mallory, 2 yr. Director. 941-776-9055
Email: dmallory66@gmail.com

Dave Watson, 1 yr. Director. 727-541-2917
Email: bwatson1@tampabay.rr.com

Bucky Joseph, 1 yr. Director 727-525-2755

Debbie Bremer, Editor 727-298-0061
Rock-A-Gram Newsletter
Email: bremerlapslary@yahoo.com

SGAMS Clubhouse Address: 4619 69th Street North, St. Petersburg, FL 33709, www.sgams.com

Clubhouse Activities: Listed on mailer coversheet and announced at membership meetings. **SGAMS Board of Director's Meetings:** 7:00 p.m., 1st Thursday of each month; September - May. All members are invited to attend SGAMS Board of Director's Meetings at our clubhouse. We solicit your attendance, and constructive suggestions for improving our club. **General Meetings:** 7:00 p.m., 3rd Thursday of each month; September - May, at our clubhouse.

President's Message

Greetings:

'Tis the season-well, not quite. Thanksgiving is the next big holiday and it may be the best. All you have to do is indulge in an obscenely extravagant meal, watch football games on TV, and eat leftovers for a week. It's a holiday for everybody. Then there is Black Friday, the real kickoff of the holiday season.

I'm thankful for all the good things in my life: family and friends, travel opportunities, the time to participate in all the activities I enjoy. I will be ever so grateful when I find the volunteers who will help put our SGAMS holiday party together. Our December meeting will be a covered dish event at the clubhouse. We have traditionally had a gift exchange for those who want to participate (\$5 limit), a great meal and a lot of fun. So, if you have any party planning inclinations, please let me know.

Have a Happy Thanksgiving!

Pat Davis, President



We Still Are Collecting Aluminum Cans



Bring your cans to the clubhouse. Our meetings next year will be held back at our clubhouse. If you would like to volunteer to collect these cans for Sue at the general meetings, please let her know. Your help would be greatly appreciated

Please note: Do not put cat food cans with the aluminum cans, unless they are aluminum. Test them with a magnet, if not sure, most of them are not. Also, no aluminum foil or bottle caps.

Sue Hazelden, Treasurer

727-321-5732

Email: sujagems1@aol.com



December Holiday Party:

Our holiday dinner will be **December 15th** (our regular meeting night). This is a potluck dinner, which will be held at the clubhouse. This get together is great fun and really helps members get to know each other. So come and join in the festivities.

Each member is asked to bring the following:

- Place setting and eating utensils for each member in your party.
- A dish to share with 10-12 friends
- A small gift for gift exchange (\$5.00 limit)

HOPE TO SEE YOU THERE!

Meet and Greet: 6:30 p.m.

Dinner: 7:00 p.m.

Welcome New Members

John Kudirka

John moved to St Petersburg from Spokane Washington earlier this year. While living in Spokane, he was a volunteer at the local Hospice facility for 4 years. After moving to Colorado, he became interested in volunteering at the Bird Sanctuary and plans on continuing his volunteer work at the Bird Sanctuary in Seminole.

He became interested in gems and jewelry-making while in college and now enjoys silversmithing and capping along with various other aspects of jewelry making. He works for HSN in St Petersburg.

Scott & Gail Archibald

Scott is interested in fossil hunting and going on field trips. He enjoys collecting gems, fluorescent minerals, and working with UV (ultra violet). They reside and work in Odessa, Florida.

Jennifer Ryan-Molaskey

Jennifer is good friends with Donna Mallory and enjoys going on field trips with her. She has been making her own jewelry for many years, but is interested in learning how to do some wire wrapping and possibly capping. She also enjoys doing stain glass and scroll saw, which allows her to follow a very intricate pattern on wood or metal. Jennifer is a nurse at Menorah Nursing Home in St Petersburg, is married and has 2 teenage sons.



Missing Cup - Have You Seen It???

Pat Joseph is missing her clear plastic, screw on lid cup. She left it at last general meeting. She was sitting in back row near the front door. If you have seen this cup or accidentally picked it up, can you please call her at 525-2755. Thank you.

UPCOMING SHOWS

November 11-13: Orlando

Central Florida Mineral & Gem Society; Central Florida Fairgrounds, 4603W. Colonial Dr.; Friday 1-6, Sat. 10-6, Sun. 10-5; Web site: www.cfmgs.org

November 19-20: West Palm Beach

45th Gem & Mineral Society of the Palm Beaches, South Florida Fairgrounds Expo Center East, 9067 Southern Blvd., West Palm Beach, FL

November 25-27: Sarasota

Show and sale; Bead Time; Hilton Gardens Inn, 8270 N. Tamiami Trail; Hours: Friday and Saturday 10-5, Sunday 10-4; free admission.
Web site: www.beadalgo.com

December 2-4: Spring Hill

Withlacoochee Rockhounds, Inc. Gem and Mineral Show, Slovene American Club, 13383 County Line Road, Spring Hill, FL

January 13-15, 2012: Largo

Pinellas Geological Society. 36th Annual Gem, Jewelry and Mineral Show and Sale, Largo Cultural Center, 105 Central Park Drive. Contact Hugh Sheffield (727) 894-2440. Hours: Friday and Saturday 10 a.m.-6 p.m., Sunday 12-5 p.m.

Source: *Star-O-lite*, October 2011

Tips and Trips, November 2011

Outcroppings, September 2011



FEDERATION NEWS

American Federation of Mineralogical Societies
November, 2011
www.AMFED.org

2012 Regional Federation Shows and Conventions

California Federation

July 13-15
Riverside, CA

Rocky Mountain Federation

TBA

Eastern Federation

September 15-16
Harrisburg, PA

South Central Federation

August 25-26
Tyler, TX

Midwest Federation

July 26-29
Wayzata, MN

Southeast Federation

TBA

Northwest Federation

May 18-20
Kennewick, WA



WE ARE A LOCAL NON PROFIT CLUB
The Suncoast Gem and Mineral Society
proudly presents their 42nd Annual

Gem, Mineral, & Jewelry Show and Sale

March 2, 3, 4, 2012

Friday & Saturday, 10 a.m. - 6:00 p.m.
Sunday, 10:00 a.m. - 6:00 p.m.

Continuous Working Demonstrations

- ◆ Bead Stringing
- ◆ Wirecraft
- ◆ Channel Work
- ◆ Gem Cutting
- ◆ and others



**DIAMONDS
EMERALDS
RUBIES
14K GOLD JEWELRY
DOOR PRIZES
EXHIBITS
AND
MUCH MORE....**

Directions

- ◆ Manareg Building, 6340 126th Avenue North, Largo.
- ◆ From Tampa I-275 cross Howard Franklin Bridge. At Exit 32, take ramp (right) onto SR-688 (Ulmerton Rd). Merge onto SR-688 and keep left. Head West (under US-19) to 66th St. Turn Left (South) onto 66th St. Go to 126th Ave. N. Turn LEFT (East) onto 126th. Building is on the right.



FREE PARKING

ADMISSION

Donations: \$5.00/adult good for all three days,
Children under 6 FREE, Students with parents or I.D. Card \$4.00
\$1.00 off admission with this ad. Limit one per person.

FREE PARKING

November Birthstone

Citrine Color: Yellow Gold



November's gemstone, Citrine, is as warm as a Van Gogh painting of sunflowers. The name Citrine comes from an old French word, "citrin", meaning lemon. One of the more rare forms of quartz, this gemstone ranges in color from the palest yellow to a dark amber named Madeira because of its resemblance to the red wine.

Perhaps because of its scarcity, there is little mention of Citrine used as a gem-stone prior to the first century B.C. The Romans were thought to be the first to wear the yellow quartz, crafting it into cabochon, or highly polished but un-faceted cuts of stone set into jewelry. Citrine became more popular during the Romantic Period, when artisans often favored these warm colored gems to enhance gold jewelry. Citrine, like all forms of quartz, was believed to have magical powers and was worn as a talisman against evil thoughts and snake venom. It was also considered to have medicinal properties and was commonly used as a remedy for urinary and kidney ailments.

Sister stone to the purple quartz known as Amethyst, Citrine crystals are found in igneous metamorphic and sedimentary rocks. It is believed that some Citrine may have actually begun as Amethyst, but heat from nearby molten rock changed it to the yellow form of quartz. Citrine is known to change color when subjected to heat and is routinely heated in the jewelry-making process to intensify its color. For this same reason, though, this gemstone should not be left in direct sunlight for a long time because it will permanently alter the color. Most Citrine is mined in Brazil, but other sources of the quartz are Bolivia and Madagascar. A gift of Citrine is symbolic for hope and strength. With its sunny brightness, this gemstone is ideal for helping anyone to get through the tough times in life!

Alternate Birthstone

Yellow Topaz

Yellow Topaz ranges in color from a peachy blush to a deep cognac. A gift of this gemstone is said to symbolize friendship and to strengthen one's capacity to give and receive love. It's golden color was believed by the Egyptians to be the glow cast by the sun god Ra.



Source: The Piedmont Prospector, Volume 52, #11

Hints and Tips

Keeping Copper and Brass Jewelry Polished. . .

Lay out a piece of foil paper shiny side up, big blob of Heinz ketchup and hand full of jewelry. Work gently with your fingers to make sure they are completely covered, rinse with warm water and dry. No harm done to any of my beads, works on sterling silver, also. (*Found on a jewelry blog!!*)

--from Snoopy Gems, August 2011, Hound's Howl, October 2011.

Julie's Page

Article by: Julia Larson, Outcroppings, September, 2011

A mineral is generally defined as being composed of inorganic material and having a definite crystal structure. They belong to a specific chemical group depending on their elements or compounds. Minerals fall into one of six crystal groupings and have distinctive properties. They are currently in excess of 3,000 different minerals, and more are being discovered. So they can be classified easily - right?

But where does mercury fit in? What about opals? And mysterious *organic* materials such as whewellite? Ah ha - got'cha! Such things are usually called minerals, but don't truly fit into the established definition. Instead, they can be called mineraloids. Let's find out more.

First mercury: Those of us of a certain age may remember coating pennies with this shiny silvery substance in chemistry class and watching the thick droplets in the palm of our hands bounce onto the floor. Of course, that was before a mercury spill caused a shutdown of the entire school and a frantic call to the hazmat team. Since mercury is a liquid, it has no crystal structure and therefore, does not exhibit such properties as cleavage or hardness. At minus 38 degrees Fahrenheit, it freezes into an isometric crystal structure. Bingo - there are the crystals.

Opal is an amorphous substance, that is, without a definite crystal structure. It is composed of tiny silica spheres that can be arranged in different patterns and densities, which diffract into various colors of the spectrum when exposed to a beam of light. Water usually composes between 6 and 10% of a stone's weight, adding to the play of light through the stone. Whewellite is a rare, low temperature hydrothermal mineral in carbon-sulfide veins. It also occurs in geodes and septarian nodules. It is associated with coal and surrounding rocks with organic material in some uranium deposits. It can also be found in microscopic crystals in living plant cells. Anyone afflicted with kidney stones may tell you it can also be found within calculi or sediment in the human urinary tract. Ouch!

For more information, check out The Mineral and Gemstone Kingdom (www.minerals.net and www.mindat.org)

A Tribute to Elizabeth (Betty) Coe

by: Mary Abel, Sister-in-law
Outcroppings, September, 2011

The education of children was very important to Betty. On the first page of her journal is the following:

One hundred years from now
It won't matter what car I drove,
What kind of house I lived in,
How much I had in my bank account,
Nor what my clothes looked like,
But the world may be a little better
Because I was important in the life of a child.
Author unknown

Betty lived this goal every day. She was always arranging programs about rocks and mineral for children at the public and private schools, with qualified speakers from the club. Many times she conducted the programs herself. She would then write a report for the Newsletter. She also wrote the following article about her project with the schools.

"In order to get young people involved in the lapidary arts, two Pinellas County Florida clubs have joined forces to attract youths to the hobby. The Suncoast Gem and Mineral Society, of St. Petersburg and the Pinellas Geological Society of Clearwater, have prepared boxes of more than thirty mineral specimens for distribution to all twenty-two Pinellas County public middle schools. Reference books were also donated by the local lapidary shop."

Betty was Director at William Holland for several years, following Harold Sparks death. She made gem trees, her specialty, and wrote an instruction book to help others learn to make them.

Betty was on the Board of the club as the Education Chairperson, when the monetary gifts to the winners of the Pinellas County Middle Schools Science, Earth Science Division competition was initiated. This was done to encourage young people to become interested in the earth sciences. The winning student was then asked to present their project to the club members at their next meeting. A letter written by Betty to the School Administration dated February 18, 1995, describes this action the club took. (This tradition continues to be awarded every year.)

We will miss her enthusiasm and participation in all our clubs activities.

Suncoast Gem & Mineral Society, Inc.
Board Meeting
October 6, 2011

The meeting was called to order at 7 p.m. Present were: Pat Davis, Sue Hazelden, George Comas, Bucky Joseph, Dave Schwebel, Donna Remsnyder, Dave Watson, and Julia Larson.

Minutes from previous meetings were approved.

The treasurer's report was approved and accepted for audit.

Correspondence: Nothing current.

Membership: No new applications.

Holiday Dinner:

Pat sent an email to Carole Haberkorn, but has not received a response. She will follow up with a phone call.

Club web site:

Board members need to be updated for 2011-12. Dave Watson noted that other clubs have a gallery for members' work and wondered if we could do this. The deadline for Rock-a-Gram articles is the morning of October 13.

Work day:

Paul Mallory has offered to help pay for tree trimming. Dave Schwebel is getting estimates. Donna Mallory will get a trailer to haul clippings away. The work day is being put off until after the first of the year.

Education:

Julia announced a trial class for jewelry assembly on the 2nd and 4th Tuesday evenings, starting October 25. An announcement will be in the newsletter. Barbara Watson has offered to hold a wire class. More information will be forthcoming.

Equipment:

There is a Genie in excellent condition at the Cash America pawn shop on 4th Street N. Bucky changed out one of the capping machines and cleaned it, so we can cut opals. We need dop wax and LubeTech solution. Bill has updated the liability releases. They are in the book in the capping room.

Historical and Field Trips:

Information already published.

Show:

Discussion of business cards vs flyers. The cards are not being returned and may not be cost effective, although some dealers like them because they are small.

Pricing Donated Items: Sue Hazelden and George Comas will do this October 29th at the clubhouse. Donna Remsnyder will take some of the findings home to price them.

Program: Julia Larson will do a program on Henry Clifton Sorby, English Geologist.

New/Old Business: None

The meeting was adjourned at 7:45 p.m..

Submitted by: *Julia Larson*, Recording Secretary

Suncoast Gem & Mineral Society, Inc.
General Meeting
Thursday, October 20, 2011

The meeting was called to order at 7:15 p.m. There was one guest present, *John Kurdicka*, who was voted in as a member by the board following the meeting.

Building:

There will be a brief work day in November to pick up the yard trash. The county will be asked to remove the concrete left from the road construction. Termite wings were found in the capping room, and the termite company will be called. Debris on the roof will be cleaned off and Donna Mallory will haul it to a trash site. The thermostat in the clubhouse is not working; Dave Schwebel will bring a new one.

Show:

Bill Schmidt reported the advertising is in full swing. We are considering dropping the mail cards. This will be discussed at the next board meeting.

Education:

Sign up sheets for the jewelry assembly session and the metal class were passed around.

Equipment:

The committee is working on the bog saw. Donna Remsnyder donated a new base for one of the Genies. Dave Schwebel has a machine to refurbish for intarsia. The Ray-Tech needs new bearings.

Holiday dinner:

We need help for this. Currently there is no chairperson.

Field trips:

Leona Sheffield reported on the Vulcan Mine field trip. The Tampa Bay Fossil Club and some Cub Scouts were there, about 50-60 people altogether. Another trip is scheduled for Saturday, November 12. It takes 1 ½-2 hours to get there; and we need to be at the gate at 8:45 a.m. The mine folks will take you into the mine and return trips are at 12 noon or 2 p.m. Donna Mallory also mentioned a field trip to LaGrange, GA, near Callaway Gardens.

Upcoming Events:

Heritage Park show, Circus McGurkis, All-You-Can Craft Jam, Tampa Gem & Fossil Club show.

A raffle was held prior to the program, which was on English geologist Henry Clifton Sorby.

The meeting was adjourned at 8:30 p.m.

Submitted by:

Julia Larson, Recording Secretary

WE THANK OUR ADVERTISERS FOR THEIR SUPPORT AND ENCOURAGE ALL OUR MEMBERSHIP TO VISIT AND PATRONIZE THEIR BUSINESSES.



Clubhouse Class Schedules

FACETING: Mondays 6-9 p.m.
CABBING: Mondays and Wednesdays 7-9 p.m.
FUSED GLASS: Tuesdays, 1st and 3rd, 7-9 p.m.

For further information regarding other classes, contact instructors.

GLASS FUSION: Julia Larson

KUMIHIMO: (a Japanese weaving technique) Sue Black at 345-8994 or email sueblack@tampabay.rr.com

WIRE WRAPPING: Dave at 541-2971 or email bwatson1@tampabay.rr.com

METAL WORKING: Donna Remsnyder at 692-6006 or email dsr75@verizon.net

CABBING (Mon or Wed): Bucky Joseph at 525-2755 or
Donna Mallory at 941-776-9055

CABBING (Sat): Lou Codol, (727-544-3973), George Comas (727-526-7176)

Dave Schwebel (727-547-0364)



ROCK-A-GRAM

*This is the official newsletter of the **SUNCOAST GEM AND MINERAL SOCIETY, INC.***

P.O. Box 13254, St. Petersburg, Florida 33733-3254

This Society is a member of the *SOUTHEAST FEDERATION OF MINERALOGICAL SOCIETIES, INC.*, and its parent society, the *AMERICAN FEDERATION OF MINERALOGICAL SOCIETIES, INC.*

The general purpose of this society is to promote popular interest in education and research in the earth sciences and lapidary arts, and to cooperate with other similar organizations.

General Meetings are held the third Thursday of each month, September through April at 7:00 p.m., at our clubhouse, **4619 69th Street North, St. Petersburg, FL**. December and May meetings are special meetings and a time and place will be announced in this bulletin. The public is cordially invited to attend the general membership meetings.

Dues: \$15.00 single or \$20.00 couple/family; due annually each September.

All exchange bulletins should be sent to the Rock-A-Gram editor.

Feel free to copy any material from this bulletin, but please list all byline credits.

ROCK-A-GRAM (Official Bulletin)

Suncoast Gem & Mineral Society, Inc.

Debra Bremer, Editor

1349 Lakeview Road

Clearwater, FL 33756

Clubhouse Activities September - May

Board Meeting:

(September - May)

First Thursday: 7:00 p.m.

Clubhouse Open:

Mondays, 7- 9 p.m.

Wednesdays, 6 - 8 p.m.

Saturday, 10 a.m. - 12 p.m.

Faceting, Silversmithing,

Fused Glass Classes:

1st and 3rd Tuesdays, 7-9 p.m.