

October 2020

Volume 55, No. 1 Page 1

President's Message:

Ah, autumn! Don't you just love these crisp, cool mornings, tossing on a light jacket for your morning, walk, the crunch of leaves on the sidewalk....No, wait, I'm dreaming again. Autumn in this part of Florida is, well, a lot like summer. Sigh.

Things around the clubhouse are pretty much the same: occasional silver classes, a bit of shop time here and there, meetings still on hold. Some things are new, though. Have you checked out the online auction? **Susan Biel** has been directing this enterprise and this month she's had help from our new treasurer **Pat Church** and from **Sue Hazelden**.

A big thank you goes out to **Sandy Daum**, who has been buying up a lot of our coral heads. I'm looking forward to thanking her in person when we finally resume our meetings. We also have a new member, **Kathryn Lynn**, who we look forward to welcoming in person.

I'm going to go out on a limb and say that maybe, just maybe, things will have settled down enough that we can resume our general meetings in January. No promises, but stay tuned. And stay healthy.

Julia Larson

Julia Larson

TABLE OF CONTENTS:

• President's Message - Cover	Gem of The Month - 7
• Member Highlight - 2	Useful Links - 8
• Officers & Director - 3	Class Schedules & Ads - 9
• Notices - 4-5	Class & Shop Protocol - 10
• Fun Stuff - 6	Who We Are & Info - 11

NEW FEATURE!!! MEMBER HIGHLIGHT CORNER!

While I was not able to get a member to “submit” to an interview for this feature this month, I had the pleasure of working with Sue Hazelden on identifying and cataloging items for our second auction. While we worked, she told me about the beginnings of the Club. The Club was established in 1969 and she has been a member since the early 1970's.

At first they held meetings in such places as the Florida Federal Bank Building on 49th St N., The Science Center on 22nd Ave. N, and the Adult Recreation Center, then they obtained a tiny house behind where the Walgreen's is at the corner of 54th Ave and 66th St. It was tiny, but it had a workshop with some machinery too. She recalled how her late husband and some of the menfolk would gather on Monday mornings to have coffee and determine what work needed to be done around the Clubhouse. What a great tradition!

Walgreen's really wanted the property and the Club sold to them and purchased our present day clubhouse from an Estate. Sue told me that the beginnings were a bit tough in that the County Inspectors kept coming up with new items that needed to be “up to code” before they would let the Club take occupancy. Meanwhile the equipment and furnishings sat in PODS on the property, which sadly resulted in several things being lost to rust and mold. Sue said that when they did get into the building she went around to yard sales and purchased the cushions for the folding chairs, because, she said, “they were too cold to sit on”.

I thought, how nice this is to get a perspective of the history of the Club, especially as a relatively new member. Thank you Sue, for sharing this with me, so I could share it with others!

“River stones remain, while water flows away.” Romanian Proverb

Officers, Directors and Appointed Positions for 2020-2021

EMAIL FOR THE FOLLOWING, UNLESS OTHERWISE NOTED IS: SGAMS2020@GMAIL.COM

Julia Larson, President 727-410-3781

Richard Bunton, Vice President 570-592-6562

Gerri Groves, Recording Secretary 727-656-0322

Patricia Church, Treasurer 941-718-0664

Susan Biel, Corresponding Secretary 315-380-7037
Email: peechikeene8@gmail.com

Kelly Nolen, 3 Year Director 440-953-8711
OR 440-346-8705 (no text)

Breta McGuire, 2 Year Director 727-744-7344
(PLEASE LEAVE A MESSAGE FOR A CALL BACK)

Irene Muench, 1 Year Director 727-421-5832

Sherry Staley, 1 Year Director 727-480-6730

Bill (William) Schmidt, Facilities 727-657-0998

Bill (William) Schmidt, Show Chair 727-657-0998

Sandy Theisz, Show Dealer Chair 727-686-1209

Donna Sapp, Membership 727-420-0383
Email: DSapp43@yahoo.com

JoAnn Knoss, Dinner Committee 727-238-8345

Debra Bremer, Webmaster 727-298-0061
Email: bremerlapidary@yahoo.com

Susan Biel, Editor, Rock-A-Gram 315-380-7037
Email: peechikeene8@gmail.com



A rock has no detectable opinion about gravity. ~ Terry Prachett

NOTICES

REMINDER: IT IS OCTOBER —AND DUES WERE DUE LAST MONTH!

The Club needs all members to pay their dues ,more than ever! Even though there aren't meeting, building expense are ongoing.

Yearly dues are \$20 single and \$30 for family [*Family means spouse and/or at least one child under 18 living in your home*]

So please don't delay—make your check out to: **SGAMS** — and send it* to:

Donna Sapp
3200 74th Avenue North
St. Petersburg, FL. 33702

***you don't need to include an application if you are a renewing member**

Thank you!!

MARCH SHOW – A “NO-SHOW”

Suncoast Gem & Mineral Society will not host a show in March 2021. After much deliberation, the Board agreed we could not guarantee a safe environment for members, vendors or the public. The vendors from this year's show were notified so they could make their plans accordingly.

While a location for the 2022 show has tentatively been identified, the venue has been closed during the pandemic so we have been unable to negotiate a contract. As soon as the location has been reopened, we will make every effort to secure it for our usual time slot, the first full weekend in March.

Julia Larson, President



NOTICES, cont.

FUND-RAISING AUCTIONS

The following email was sent out to all members:

Hello SGAMS Members!

Below you will find the link to the SGAMS 2nd Online Auction, through Betterworld.org. This auction has many items - beautiful, handcrafted dichroic glass pendants (and more) by our very own, very talented President, Julia Larson, plus a collection of stones, cabs, specimens, etc. from member Ruff Avra Duff. Many thanks to both for their generous donations!

And many thanks to Patricia Church for the photography, and Sue Hazelden for identification and cataloging of the items.

PLEASE SHARE THIS LINK WITH EVERYONE YOU KNOW! Remember, Christmas is on the horizon and there are great potential gifts in this auction - and it SUPPORTS YOUR CLUB!

CLICK HERE:

<http://sgmssp.betterworld.org/auctions/sgams-auction-2>

A NOTE REGARDING FUTURE AUCTIONS:

We will continue to accept donations for ongoing auctions— so to help you in determining what to donate, basically anything related to Gems, Minerals, Jewelry, Silversmithing, Beading, tools, books, etc. Something that would make sense to be offered by a Gem & Mineral Society. Please consider donating items that you know would fetch a good price, and catch the interest of potential bidders. I have found the process of readying things for auction, and especially the uploading of the information, a tad tedious, so if you could please, aim to donate items that would be in the value range of \$15.00 and higher. Again, a reminder that we cannot set a reserve, only an opening bid, so whatever an item's winning bid is, that is the selling price. We will make arrangements to return unsold items, if you wish, however, we are also holding such items aside for the day we can return to the Clubhouse for meetings and hold raffles again!

It is also very important that you include a Donation Form with the Good Faith Value of what you are donating. The form will be included as the last page of this newsletter. To drop off donations, please contact me at:

EMAIL—peechikeene8@gmail.com

Thank you!

Susan Biel

~ I hear a lot of members remark about all the “stuff” they have, and what a great time to weed that “stuff” out, those slabs you’ve never gotten around to, the duplicate tools, the cabs and gems never set, the rings, pendants, earrings you made that are just sitting in a drawer! Yes! Do it now! ~

There will always be rocks in the road ahead of us. They will be stumbling blocks or stepping stones; it all depends on how you use them.

~ Friedrich Nietzsche



MAN FINDS 9+ CARAT DIAMOND

LITTLE ROCK, Ark. (Arkansas State Parks) — On Labor Day, Kevin Kinard, a 33-year-old bank branch manager from Maumelle visited Arkansas's Crater of Diamonds State Park and found the second-largest diamond found in the park's history. "I only wet sifted for about 10 minutes before I started walking up and down the plowed rows. Anything that looked like a crystal, I picked it up and put it in my bag," he said. While searching in the southeast portion of the diamond search area, Kinard picked up a marble-sized crystal that had a rounded, dimpled shape. "It kind

of looked interesting and shiny, so I put it in my bag and kept searching. I just thought it might've been glass," he said.

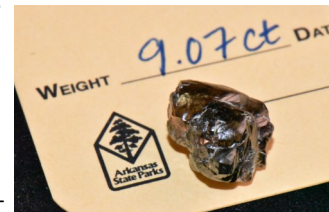
The plowed soil of the park's 37.5-acre diamond search area was fairly dry on Labor Day Monday, with temperatures in the low 90s. A few clouds provided occasional relief from the sun.

After a few hours of searching, Kinard and his friends stopped by the park's Diamond Discovery Center, where park staff identifies visitor finds and register diamonds. "I almost didn't have them check my finds, because I didn't think I had found anything. My friend had hers checked, though, so I went ahead and had them check mine, too," he said.

An employee identified Kinard's rocks and minerals but sat his rounded, dimpled find aside to carry into the office for closer examination. After a few minutes, park managers brought Kinard into the office and revealed that he had discovered a diamond weighing more than nine carats. "I honestly teared up when they told me," he said. "I was in complete shock!"

"Congratulations to Mr. Kinard on finding this impressive diamond – the second largest found at the park since 1972," said Stacy Hurst, secretary of the Arkansas Department of Parks, Heritage and Tourism. "A find like this is always thrilling for the park guest, as well as the park staff, who get to help identify the gem and share in the excitement."

Weighing 9.07 carats, Kinard's diamond is the second-largest found at the park since the Crater of Diamonds became an Arkansas state park in 1972. The only larger diamond found during that time is the 16.37-carat white Amarillo Starlight, discovered in August 1975. Park Superintendent Caleb Howell said, "I always love to see the reactions and excitement of our visitors when they find large diamonds. When I met Mr. Kinard, it was immediately evident that he was shocked and speechless." According to Assistant Superintendent Dru Edmonds, "Mr. Kinard's diamond is very large, with a brandy brown color.



It has a rounded, dewdrop shape and a metallic shine typical of all Crater diamonds." Edmonds continued, "Conditions in the diamond search area were perfect for Mr. Kinard to find his diamond. Park staff plowed the search area on August 20, just a few days before Tropical Storm Laura dropped more than two inches of rain in the park. The sun was out when Mr. Kinard visited, and he walked just the right path to notice the sunlight reflecting off his diamond."

Kinard also noted the significance of the date he found his diamond. "It weighs 9.07, and I found it on 9/7. I thought that was so unique!" Finders of large Crater diamonds often name their gems. Kinard chose to honor his friends with the name of his diamond, calling it the Kinard Friendship Diamond. "We love to travel together and had such a great time out here. It was a very humbling experience."

When asked what advice he would give other visitors, Kinard said, "Have the park staff check everything, because you never know. I would have never in a million years dreamed that I had found anything. Always have them check it!"

As of this publication [September 23, 2020], 246 diamonds have been registered at Crater of Diamonds State Park in 2020, weighing a total of 59.25 carats. An average of one to two diamonds are found by park visitors each day.

Gem of the Month:

OCTOBER: TOURMALINE



October has two gemstones, Opal and Tourmaline. This October we will feature Tourmaline.

"Tourmaline" is the name of a large group of boron silicate minerals. These minerals share a common crystal structure and similar physical properties - but vary tremendously in chemical composition. The wide range of compositions and color zoning within crystals causes tourmaline to occur in more colors and color combinations than any other mineral group.

Tourmaline is one of the world's most popular gemstones and it serves as a birthstone for the month of October. Because of its popularity, tourmaline is easy to find in jewelry stores. Well-formed tourmaline crystals are also valued by mineral specimen collectors. Specimens with attractive colors and crystal forms can sell for thousands of dollars.

The first commercial gemstone mine in the United States followed an 1821 discovery of tourmaline near the town of Paris, Maine. Over the past 200 years, significant amounts of pink and green tourmaline have been produced from dozens of Maine localities. The most important source of tourmaline in the United States has been the tourmaline mines of southern California. Tourmaline has been mined there since the late 1800s

Today, discoveries of tourmaline of various kinds are made in Afghanistan, Mozambique, Namibia, Nigeria, Pakistan, Tanzania, the United States and other countries. These provide the market with a constantly changing supply of gem tourmaline and mineral specimens."

From Geology.com; Author: [Hobart M. King](#), PhD, GIA Graduate Gemologist



"Rocks are not lifeless.

They resonate with a memory that is the very essence of Life itself" ~ Anonymous

Helpful Links:

American Federation of Mineralogical Societies web site is at: <http://www.amfed.org>

American Lands Access Association: www.amlands.org

Southeast Federation of Mineralogical Societies Website at: <http://www.amfed.org/sfms>

National Park Foundation: www.nationalparks.org/explore-parks

Canaveral Mineral & Gem Society: www.canaveral-mgs.com

Central Florida Mineral & Gem Society: www.cfmgs.org

Imperial Bone Valley Gem, Mineral & Fossil Society: www.bonevalley.net

Pinellas Geological Society: www.pgs.rocks

Tampa Bay Fossil Club: www.tampabayfossilclub.com

Withlacoochee Rockhounds of Hernando County: www.withlacoocheerockhounds.com

An amazing resource is the website: <https://geology.com> — a wealth of information on geology, rocks, minerals, volcanoes, etc. ; maps, and geology products for sale.

Our Web Site: <http://www.sgams.com>

WE THANK OUR ADVERTISERS FOR THEIR SUPPORT AND ENCOURAGE ALL OUR MEMBERSHIP TO VISIT AND PATRONIZE THEIR BUSINESSES.



Are you a member of SGAMS,
and want to promote your busi-
ness?
Place Your Ad Here.

Clubhouse Class Schedules - By Reservation Only*

* please see CLUBHOUSE PROTOCOL DUE TO COVID, PAGE 10

CABBING: Tuesdays, 6 to 9 pm

Thursdays 12 to 4pm

SUSPENDED UNTIL FURTHER NOTICE

Larry Murray 727-686-1314

FACETING/WIREWRAPPING: Tuesdays, 6 to 9 pm

Dave Watson 727-541-2917 or sgams2020@gmail.com

SILVER SMITHING: Tuesdays, 6 to 9 pm and Saturdays 1 to 5 pm

Joe Cooper 317-775-5476 or sgams2020@gmail.com

WAX CASTING: By Reservation, announced by Email Blast to All Members

Joe Cooper 317-775-5476 or sgams2020@gmail.com

CLUBHOUSE PROTOCOL DUE TO COVID (revised 9/2020)

Dear SGAMS Member

We sincerely hope that all of our members have been staying safe during this most stressful time. Due to the continuing pandemic and County guidelines for COVID-19, the SGAMS Board of Directors made the decision to provide shop time, however, to protect our members and our moderators the number of members allowed in our shops at any time has been limited.

Cab Shop reopening guidelines.

At the beginning of the week, Moderators will be contacted to determine if they will be holding shop. Then an email will be sent out to all members, announcing the schedule and it will contain the Moderator's contact information so that you may connect with them directly. If there are openings, you will be put on the schedule.

Please be advised that you must be scheduled for your shop time. If you do not receive permission from your moderator, please do not just show up, for you will be turned away. We must ensure adequate social distancing so only three members at a time will be permitted to attend the Cab Shop session. The moderators will rotate individuals so everyone gets a chance to shop time. We ask for your patience as we develop a schedule that works for everyone.

Silver Smithing Students

For Silver Smithing Students our rules will be similar to the above. Joe Cooper will provide two days each week Tuesday 6 pm till 9 pm and Saturday from Noon till 4 pm.; because of the limited space in the silver room, only two students will be allowed at each work sessions. Joe will send me notification of class times, and when I send the email blast, his email will be included for you to contact him directly—this also applies to Casting Classes.

Please note:

- You must wear a face covering (mask) at all times during shop time or whenever you are within 6 feet of other members.
- As always you are required to clean up all the equipment that you use.
- If you are scheduled for a shop session or class, (please, please, please,) only attend if you are feeling 100% well. If you feel the slightest bit unwell please advise your moderator and stay home. We will all thank you for protecting our moderators and fellow members.

Susan Biel

SGAMS Corresponding Secretary

peechikeene8@gmail.com

ROCK-A-GRAM

This is the official newsletter of the SUNCOAST GEM AND MINERAL SOCIETY, INC. , 4619 69th St. N. St. Petersburg, FL 33709*

This Society is a member of the SOUTHEAST FEDERATION OF MINERALOGICAL SOCIETIES, INC., and its parent society, the AMERICAN FEDERATION OF MINERALOGICAL SOCIETIES, INC

The general purpose of this society is to promote popular interest in education and research in the earth sciences and lapidary arts, and to cooperate with other similar organizations

General Meetings are held the third Thursday of each month, September through April at 7:00 p.m., at our clubhouse, 4619 69th Street North, St. Petersburg, FL. December and May meetings are special meetings and a time and place will be announced in this bulletin. The public is cordially invited to attend the general membership meetings. **[NOTE FOR 2020: GENERAL MEETINGS HAVE BEEN SUSPENDED UNTIL FURTHER NOTICE, DUE TO COVID-19]**

Dues: \$20.00 single or \$30.00 couple/family; due annually each September

Feel free to copy any material from this bulletin, but please list all byline credits

If you have an article or information that you would like to contribute to the Rock-A-Gram, please email it to peecheene8@gmail.com with **"FOR THE ROCK-A-GRAM"** in the subject line, by the first Thursday of the month, between September and May. Thank you! ~ Susan Biel, Editor

*[the club no longer has a Post Office box, and now receives mail at this location]

Webmaster

(Website) **Suncoast Gem & Mineral Society, Inc.**
Debra Bremer
Email: bremerslapidary@yahoo.com
Phone: (727) 298-0061
www.SGAMS.com

Membership Committee

(Membership)—**Suncoast Gem & Mineral Society, Inc.**
Donna Sapp
Email: DSapp43@yahoo.com
Phone: (727) 420-0383
3200 74th Avenue North, St. Petersburg, FL 33702

Show Committee

(Show Chair)—**Suncoast Gem & Mineral Society, Inc.**
Bill Schmidt
Email: SGAMSGemShow@gmail.com
Phone: (727) 657-0998
4619 69th Street North, St. Petersburg, FL

Facilities

(Building Supervisor)—**Suncoast Gem & Mineral Society, Inc.**
Bill Schmidt
Email: SGAMSGemShow@gmail.com
Phone: (727) 657-0998
4619 69th Street North, St. Petersburg, FL

Dinner Committee

(Club Dinners)—**Suncoast Gem & Mineral Society, Inc.**
JoAnn Knoss
Email: sgams2020@gmail.com
Phone: (727) 539-6388
4619 69th Street North, St. Petersburg, FL

Dealer Contact

(Dealer Chair)—**Suncoast Gem & Mineral Society, Inc.**
Sandy Theisz
Email: sgams2020@gmail.com
Phone: (727) 686-1209
4619 69th Street North, St. Petersburg, FL

